



WILDLAND FIRES: HOW CALIFORNIA LAND TRUSTS ARE RESPONDING AND ADAPTING



2018

CALIFORNIA

Land and Water Conservation Conference

MARCH 6-8, MCCLELLAN CONFERENCE CENTER



“

THE LOVE IN
THE AIR IS
THICKER THAN
THE SMOKE

SNAPSHOT IN TIME: 1973 VS 2017

1973
Year

160,218
Acres



2017
Year

1,248,606
Acres



FIRE ADAPTED LANDSCAPES

“Post-wildfire habitats are not catastrophic wastelands; they are a unique component of the ecosystem that supports a diverse, abundant and valuable wildlife community that should be considered in planning post-fire management. There is a growing need to understand the value of the habitats created by wildfire and the critical elements within burned areas.”

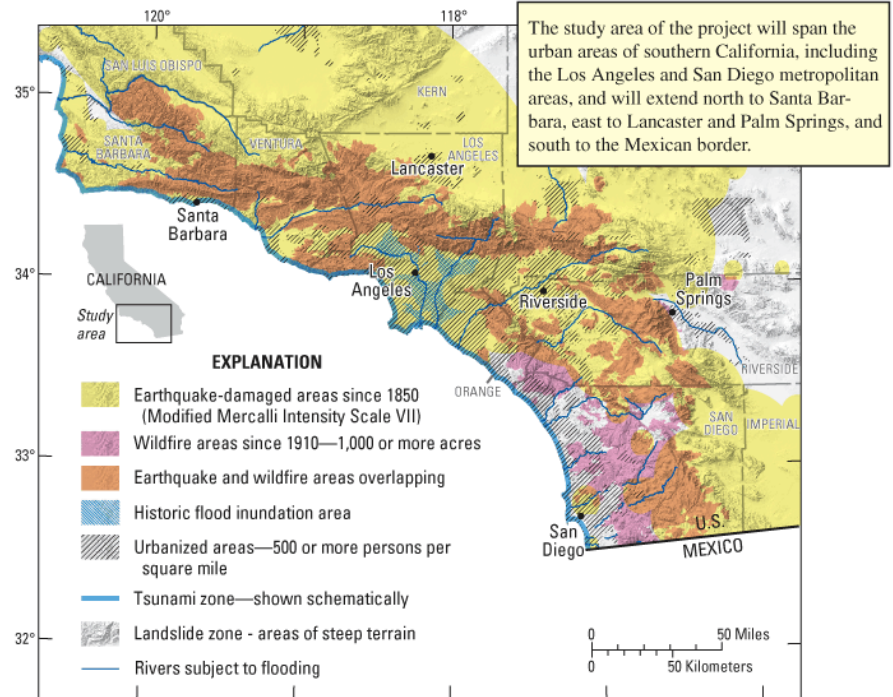
- Point Blue Conservation Science



A LOOK AT HISTORY

USGS map 2007

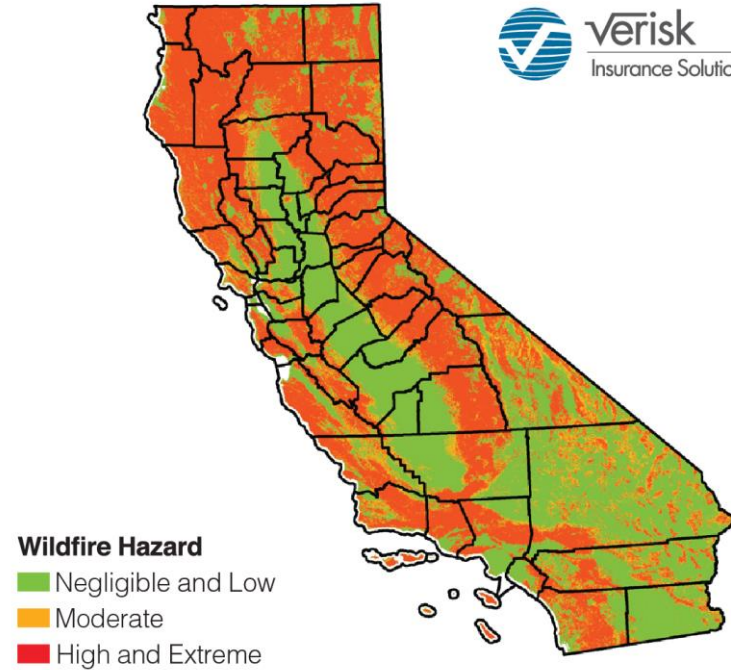
Historic footprint of natural disasters in Southern California



AT RISK

2015- Insurance Journal

California is the nation's biggest wildfire risk. More than 1.66 million homes are considered to be at moderate or higher risk



PREPARE AND ACT

Resilience means more than just bouncing back; it means being more prepared for our future.

We can and should prepare ourselves for the next fire or natural disaster.

Fire is part of the natural landscape. So we must do what we can to manage the risk and maintain the ecological integrity of the land.



SPEAKERS COMING UP:

**Christy Wyckoff, Senior Wildlife Ecologist,
Santa Lucia Conservancy**

**John McCaull, Land Acquisition Program
Manager, Sonoma Land Trust**

**Caitlin Scott, Senior Communications
Counselor, Full Court Press**

**BUT FIRST,
WE WANT TO HEAR FROM YOU...**

- **How has your land trust been impacted by the fires?**
- **What advice or lessons learned do you have to share?**
- **What are the questions or challenges that you have in front of you?**